



### QUICK-START INSTRUCTIONS:

These instructions have been designed for the experienced pool and/or spa technician. The instructions are meant to be a guide to show how easy it is to assemble your new ES8000 Series Outdoor Equipment System.

### Plumbing Considerations:

It is important to identify the plumbing systems of the spa.

**Suction Line** - Water coming from the spa (to be heated) via suction fittings and/or filter connected to front of pump(s).

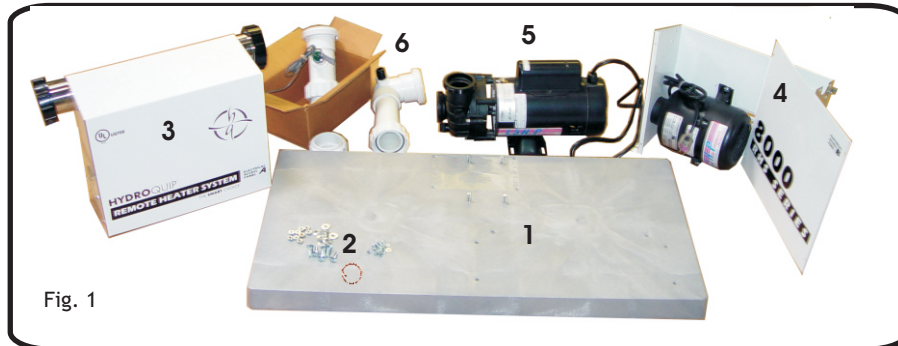
**Return Line** - Water being returned to the spa (heated) via the jets and/or filter connected to the side or top of pump(s) through heater to spa.

**Air Blower** - Provides extra water action via an integrated air channel or injectors (Not on all spas) connected to blower.

**Additional Pumps:** Sometimes referred to as "Jet Pump(s)" these/this pump(s) provides extra jet action when needed.

#### UNPACK AND INVENTORY:

Unpack all the contents of the cartons and make sure you have all the contents pictured in Fig. 1. (Pump and Blower may vary)



- 1 = Base
- 2 = Mounting Hardware
- 3 = Top Control Box (A)
- 4 = Bottom Control Box (B)
- 5 = Pump
- 6 = Plumbing Hardware

#### TOOLS REQUIRED:

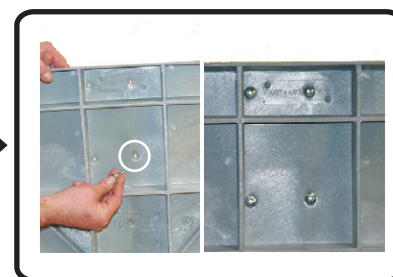
Make sure you have all the tools you will need to assemble the control system.

- Adjustable Wrench
- Phillips Screw Device
- 7/16 Deep Socket
- 7/16 Open-End Wrench
- Standard Screw Driver
- Hammer (for tapping screws through base)

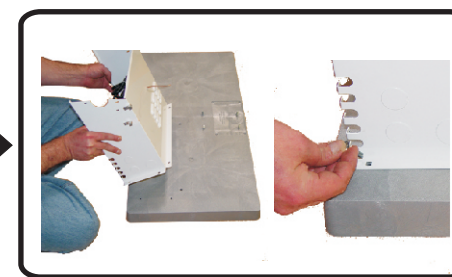
#### Pump & Control Box Mounting:



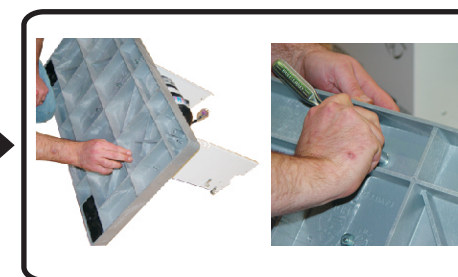
STEP 1: To protect the flow switch assy. during assembly install it on the heater immediately upon unpacking.



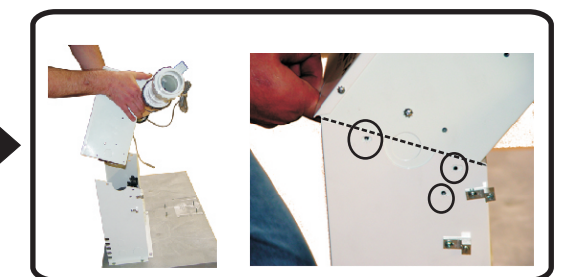
STEP 2: Insert the (4) pump mounting bolts in the pre drilled holes from the bottom of the base.



STEP 3: Position the lower box assy over the pre-drilled holes in the base and push or tap the (6) screws through.



STEP 4: Flip the base with box over and install the washers and nuts. Tighten with the 7/16 deep socket/wrench.

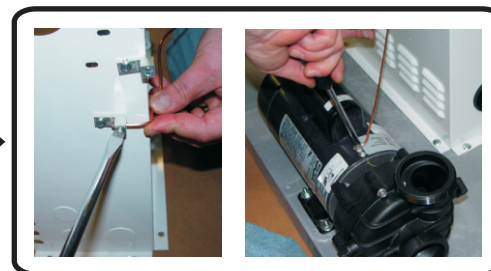


STEP 5: Slide the top portion of the control box into the lower portion. Secure on each side with (3) screws and lock washers.

#### Pump & Control Box Mounting cont:



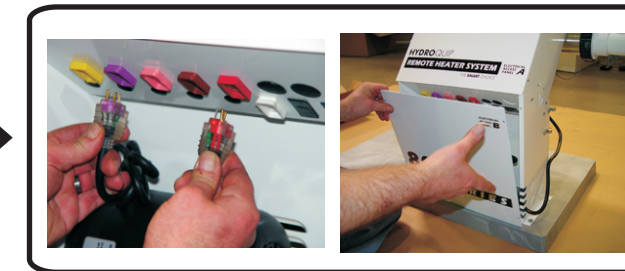
STEP 6: Place the pump over the (4) mounting bolts, install nuts and washers and leave slightly loose until header assy is aligned.



STEP 7: Use the included #8 copper wire to bond the pump to the main control box.



STEP 8: Install the pump header and gaskets. Then insert the temperature sensor (if applicable) into the liquid tight connector until flush and tighten.



STEP 9: Plug the components into the receptacles and re-install the lower box cover plate.



STEP 10: System complete and ready to be installed.